

iWay Software, an Information Builders company, reduces custom integration programming while creating an architecture that rapidly adapts to change.

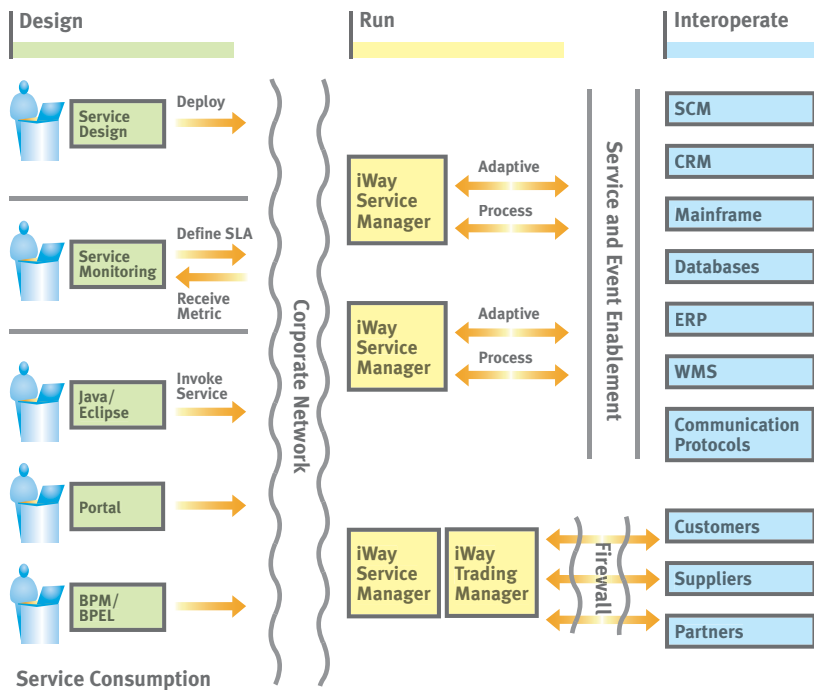
Unique Features

- Includes the industry's most **inter-operable ESB**, which easily creates powerful and reusable business services
- Provides the industry's most **productive GUI service design tools** for the development of business services that leverage existing IT systems investments
- Includes **powerful non-XML-to-XML, XML-to-XML, and XML-to-non-XML** transformation capabilities
- **Runtime technologies deploy** using existing application, application server messaging, and other middleware

Key Benefits

- **Link programs, development platforms,** and EAI tools to systems and data throughout the entire extended enterprise
- **Simplifies skill sets** needed for integration project design, deployment, and maintenance, which optimizes utilization of other, more skilled IT resources
- **Speeds business processes changes** and integration implementations
- **Provides better management visibility** into IT projects
- **Reduces TCO and risk** of projects and ongoing maintenance

iWay SOA Middleware



iWay SOA Middleware helps improve IT's ability to service the organization.

The Most Effective SOA and EDA Foundation Available

For organizations trying to get the most out of existing applications and infrastructure investments, iWay SOA Middleware offers the fastest way available to create powerful, reusable business services from existing applications. No other software suite provides an easier route to composite services that augment, reuse, and replace services created in packaged applications like SAP and J.D. Edwards or in technologies such as J2EE™, .NET™, CICS™, Tuxedo™, and CORBA.

iWay Software provides better interoperability for more infrastructure components than anyone on the market. We proved it by becoming the industry's source for interoperability and adapter solutions. Our technology makes all aspects of your existing infrastructure – every major integration, application, and development platform – work in concert, so it's easy to follow service-oriented architecture (SOA) and event-driven architecture (EDA) principles while rapidly developing new business applications.

Thousands of customers use iWay Software technology to perform these functions:

- Expose applications, B2B interactions, and middleware as services
- Compose new coarse-grained, business-level services from fine-grained, application-level services
- Deploy services and business processes anywhere in the enterprise, on any significant hardware, operating system, or application platform
- Maintain security and usage policies
- Monitor service-level agreements and service consumption
- Orchestrate services into complete business processes
- Reuse these services in a variety of contexts, including .NET and Java composite application development, portals, enterprise search, traditional EAI, Web services gateways, and more

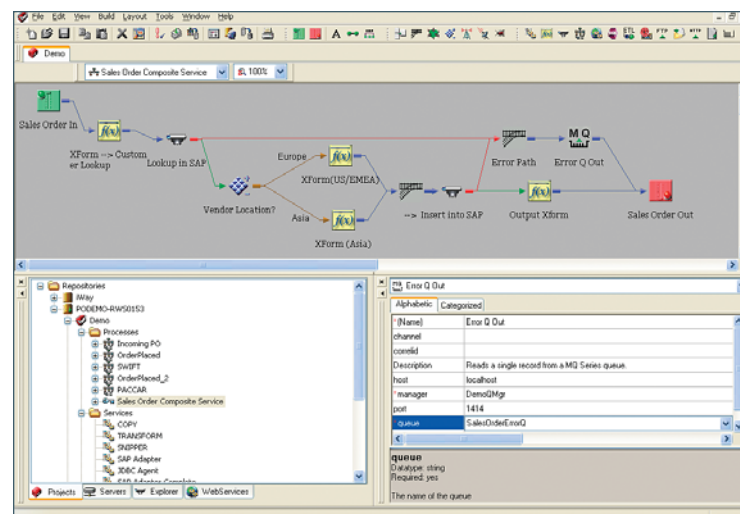
Other solutions require a tremendous amount of custom integration code to expose applications through XML, Web services, .NET, or Java interfaces – in other words, they assume that the foundation of a service-oriented architecture is already in place. They often also have stringent platform, application server, and messaging requirements.

As a result, many organizations tie up their most capable and costly people with efforts to create an interoperable environment before they can even reasonably discuss business value. By eliminating this requirement, iWay SOA Middleware reduces the cost, timelines, and complexity of IT projects and maintenance. It makes your IT staff more productive, and your projects less risky.

iWay SOA Middleware includes four products – iWay Service Manager, iWay Trading Manager, iWay Enterprise Index, and iWay Process Manager.

iWay Service Manager

iWay Service Manager is an open-transport Enterprise Service Bus (ESB) that provides a single platform for SOA and EDA, and extends to B2B service design and deployment.



Technical process flow orchestrates required logic and interactions with a packaged application system.

Since services must be consumed to be effective, iWay Service Manager provides the most comprehensive set of service interfaces available. It automatically generates WS-I-compliant WSDL for Web services-based tools, and also supports a broad array of additional service interfaces, including standards such as JMS, JCA, and .NET, and plug-ins for tools such as Eclipse, BEA WebLogic Workshop, IBM WebSphere tools, Microsoft BizTalk Server, SAP NetWeaver, and many more. In addition, users can easily extend these services to B2B format/transport combinations such as EDI over AS2, XML over ebXML messaging, flat files over FTP, and others.

iWay Service Manager consists of graphical service design tools, a distributable runtime engine, and service monitoring capabilities.

Graphical Service Design Tools. iWay Service Manager's service design toolkit provides the ability to publish services from virtually any information asset in the enterprise, compose coarse-grained business services from fine-grained application services, and transform one service interface to another.

These tools provide several capabilities not found in other tools:

- The ability to instantly expose services from complex application systems such as SAP, Siebel, mainframe applications, and many others, without programming
- The ability to compose high-performance Web services from proprietary application interfaces, unlike Business Process Execution Language (BPEL) tools that require Web services interfaces
- The ability to graphically define transformations to and from non-XML formats, unlike ESBs that only support XSLT
- The ability to support services designed for multiple platforms (e.g., a mainframe-based WebSphere deployment and a Unix-based WebLogic deployment) from a single GUI

Runtime Engine. The highly scalable and distributable runtime architecture for iWay Service Manager includes event detection, service hosting, intelligent routing, transformation processing, and adapter hosting. Its support for synchronous and asynchronous messaging includes built-in security capabilities (e.g., digital certificates and LDAP usage), logging, and correlation management.

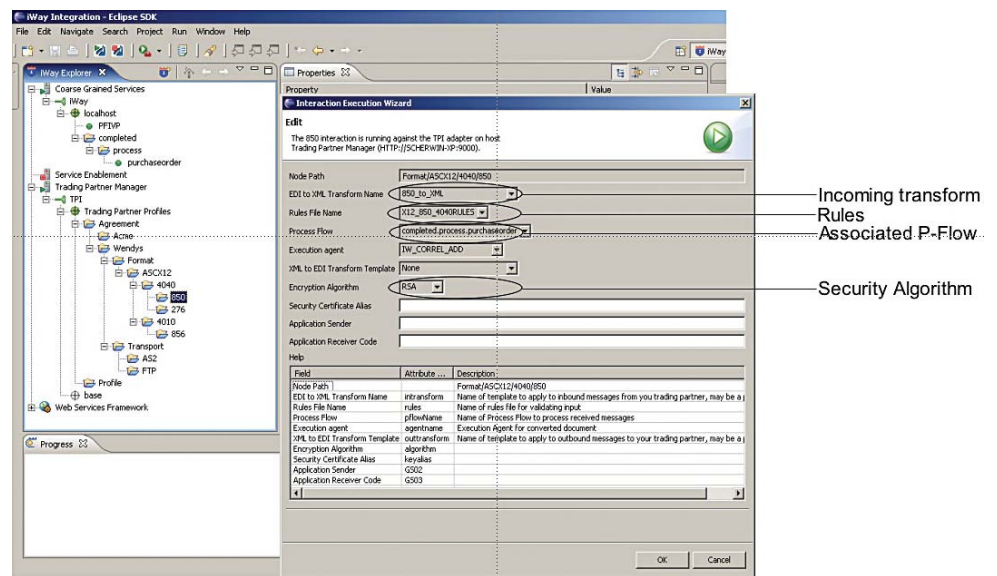
Unique features of the iWay Service Manager runtime include:

- Highly extensible architecture that provides far greater flexibility than most standard exit-based strategies, enabling custom encryption, logging (e.g., for compliance), transports, and so on
- Ability to run on any platform, including Windows, Linux, Unix, iSeries, and mainframe computers, either using its standalone container or any of the major commercial or open-source J2SE or J2EE containers and deploy onto emerging platforms such as CISCO AON routers and the Google Search Appliance
- Advanced capabilities to associate events with processes, transformations, and systems in a consistent, service-oriented way

Service Monitoring and Management. iWay Service Manager provides several ways to monitor, manage, and secure services and SOA processes – including linear, long-running, and asynchronous transactions – for an unprecedented level of visibility and control. Capabilities include global policy management, identification and management of service interdependencies, root cause analysis, and the monitoring of overall system characteristics, service characteristics, usage characteristics, and service-level agreements (SLAs). As a result, you can identify the services the business uses most, which allows you to prioritize your maintenance and enhancement resources.

iWay Trading Manager

iWay SOA Middleware extends to business-to-business (B2B) environments. Unlike other software suites that require a completely separate B2B server, iWay Software augments iWay Service Manager's basic B2B functionality with an add-on, iWay Trading Manager, to deliver a simple way to manage complex environments.



iWay Trading Manager provides an easy-to-use, customizable portal, used by trading partners for self-provisioning and accessing the other applications of the B2B gateway.

In addition to message correlation and expanded auditing capabilities, it provides a graphical interface that enables users to create partner agreements: the correlation of a partner, transport (e.g., EDIINT), message type (e.g., EDIFACT), and process. Trading partner information is managed by hierarchy (i.e., how a partner fits within their parent organizations, if any) and by exception (i.e., how a partner differs from others within its hierarchy), so users only need to specify the bare minimum to manage any trading partner interaction.

Although designed for B2B use, iWay Trading Manager can also assist managers of complex internal integration environments.

iWay Enterprise Index

iWay Software's industry-leading SOA technology extends to enterprise search by combining the Google Search Appliance and iWay Service Manager. Together, they create a completely new way to find, manage, and use information within the integrated enterprise.

The screenshots illustrate the iWay Enterprise Index search interface. The top screenshot shows the search input field with the text "warrant" entered. The middle screenshot shows the search results for "warrant", including links to XML files and a search result for "outstanding warrant". The bottom screenshot shows a table of outstanding warrants with columns for Issuing Judge, Date, Time, Type, First Name, MI, Last Name, ID#, and Notes.

Issuing Judge	Date	Time	Type	First Name	MI	Last Name	ID#	Notes
stere	20050826	15:38:00	warrant	harrison	ja	stewart	1234567	hardback chrysaethronm

iWay Enterprise Index searches data throughout the enterprise, resulting in rapid, at-your-fingertips easy retrieval of information that previously would have been locked up in proprietary information systems.

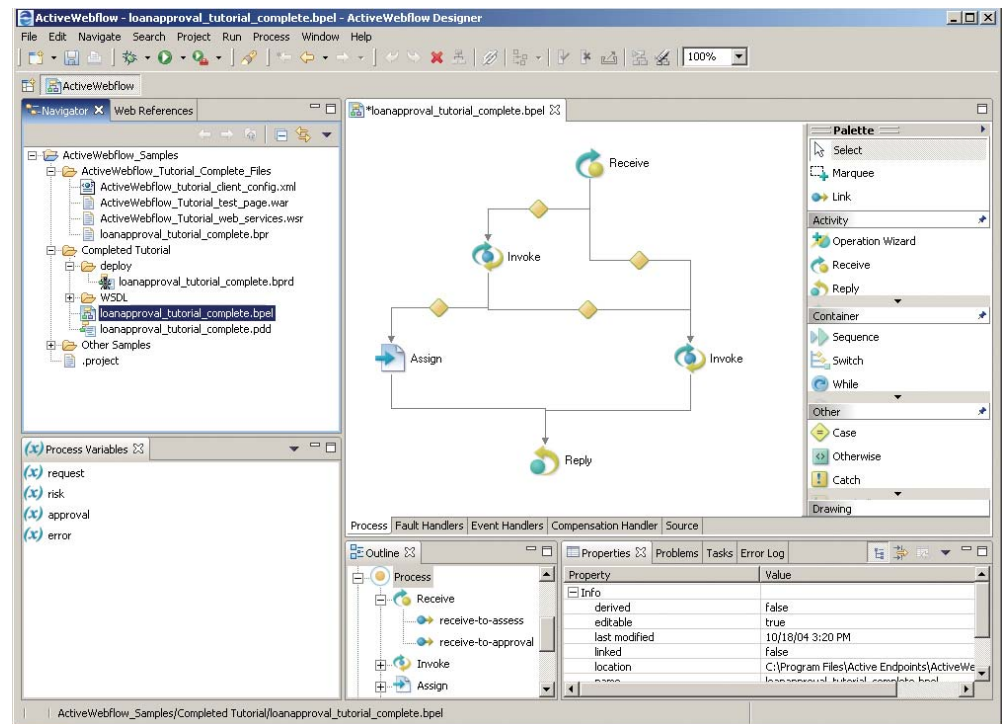
Enterprise data flows throughout an enterprise in hundreds of different ways, including Web services, programmatic interfaces such as JCA, and message types such as EDI, XML, and flat files sent over a variety of transports. iWay Enterprise Index taps into these data streams, transforms them into more usable and uniform XML-based formats, and prepares them for searching by end users. Security, keyword indexing, and support for non-XML formats ensure that the combined iWay and Google search capabilities extend to almost any type of information available in the enterprise.

The result is rapid, at-your-fingertips easy retrieval of information that previously would have been locked up in proprietary information systems.

iWay Process Manager

For organizations that want to create long-running, stateful business processes, iWay Software provides iWay Process Manager, a full-featured business process management (BPM) tool that leverages existing assets using Web services and BPEL. This tool provides an Eclipse-based graphical interface that helps users build and simulate business processes, create expressions, reuse common BPEL snippets, and ensure the validity of BPEL documents. Deployment is easy and platform-neutral, and provides the scalability and reliability needed for the most critical business processes.

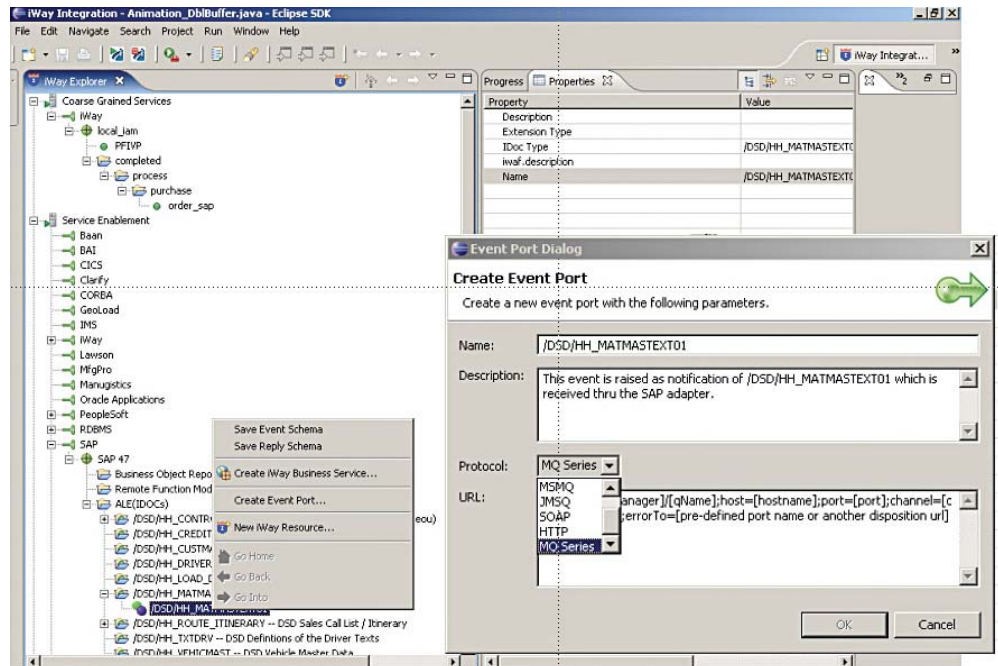
The BPEL specification only uses Web services. Use the iWay Service Manager to design services for assets that aren't available as Web services, or to create user-friendly business services instead of trying to use low-level application services.



iWay Process Manager creates a business process flow, calling to Web services within a stateful broker.

iWay Universal Adapter Suite

Adapters are iWay Software's heritage, and our 15-year experience with thousands of customers is brought to bear in the Universal Adapter Suite. Over 300 adapters provide easy access to any information system. Smaller ESB and BPM vendors don't provide the number of adapters iWay Software does, and large vendors with complex software suites often have different adapters for each part of the software stack. iWay's Adapter Suite works across everything in the SOA Middleware Suite, and more.



| The iWay Universal Adapter Suite allows you to service- and event-enable your existing IT investments without coding.

Find Out More

To see how we can help you succeed, visit us at www.iwaysoftware.com, e-mail us at info@iWaySoftware.com, or in the U.S. and Canada, call toll-free (866) 297-4929.

Worldwide Offices

North America

United States

- **Atlanta,*** GA (770) 395-9913
- **Baltimore,** MD Professional Services: (703) 247-5565
- **Boston,*** MA (781) 224-7660
- **Channels** (800) 969-4636
- **Charlotte,** NC Professional Services: (704) 494-2680
- **Chicago,*** IL (630) 971-6700
- **Cincinnati,*** OH (513) 891-2338
- **Dallas,*** TX (972) 490-1300
- **Denver,*** CO (303) 770-4440
- **Detroit,*** MI (248) 641-8820
- **Federal Systems,*** DC (703) 276-9006
- **Hartford,** CT (860) 249-7229
- **Houston,*** TX (713) 952-4800
- **Los Angeles,*** CA (310) 615-0735
- **Minneapolis,*** MN (651) 602-9100
- **New Jersey*** Sales: (973) 593-0022
- **New York,*** NY Sales: (212) 736-7928
Professional Services: (212) 736-4433, ext. 4443
- **Orlando,*** FL (407) 804-8000
- **Philadelphia,*** PA Sales: (610) 940-0790
- **Phoenix,** AZ (480) 346-1095
- **Pittsburgh,** PA Sales: (412) 494-9699
- **St. Louis,*** MO (636) 519-1411
- **San Jose,*** CA (408) 453-7600
- **Seattle,** WA (206) 624-9055
- **Washington,*** DC Sales: (703) 276-9006
Professional Services: (703) 247-5565

Canada

Information Builders (Canada) Inc.

- **Calgary** (403) 538-5415
- **Ottawa** (613) 233-0865
- **Montreal*** (514) 421-1555
- **Toronto*** (416) 364-2760
- **Vancouver** (604) 688-2499

Mexico

Information Builders Mexico

- **Mexico City** 52-55-5062-0660

Australia

Information Builders Pty. Ltd.

- **Melbourne*** 61-3-9631-7900
- **Sydney*** 61-2-8223-0600

Europe

- **Belgium*** Information Builders Belgium
Brussels 32-2-7430240
- **France*** Information Builders France S.A.
Paris 33-14-507-6600
- **Germany** Information Builders (Deutschland)
Eschborn* 49-6196-77576-0
- **Netherlands*** Information Builders
(Netherlands) B.V.
Amsterdam 31-20-4563333
- **Portugal** Information Builders Portugal
Lisbon 351-217-217-400
- **Spain** Information Builders Iberica S.A.
Barcelona 34-93-344-32-70
Bilbao 34-94-452-50-15
Madrid* 34-91-710-22-75
- **Switzerland** Information Builders Switzerland AG
Dietlikon 41-44-839-49-49
- **United Kingdom*** Information Builders (UK) Ltd.
London 44-845-658-8484

Representatives

- **Austria** Raiffeisen Informatik Consulting GmbH
Vienna 43-12-1136-3870
- **Brazil** InfoBuild Brazil Ltda.
São Paulo 55-11-3285-1050
- **China**
InfoBuild China, Inc.
Shanghai 86-21-5080-5432
Rongji Software Technology Co., Ltd.
Beijing 86-10-5873-2031
- **Denmark** InfoBuild AB
Kista 46-735-24-34-97
- **Egypt** Al-Hisn Al-Waqi (AHAW)
Riyadh 996-1-4412664
- **Ethiopia** MKTY IT Services Plc
Addis Ababa 251-11-5501933
- **Finland** InfoBuild Oy
Vantaa 358-207-580-840
- **Greece** Applied Science
Athens 30-210-699-8225
- **Guatemala** IDS de Centroamerica
Guatemala City 502-2361-0506
- **Gulf States** Al-Hisn Al-Waqi (AHAW)
 - Bahrain ■ Kuwait ■ Oman
 - Qatar ■ Yemen ■ United Arab EmiratesRiyadh 996-1-4412664
- **India*** Amtex Systems Inc.
Chennai 91-44-42177082

- **Israel** NESS A.T. Ltd.
Tel Aviv 972-3-5483638
- **Italy** NessPRO Italy S.p.A.
Genoa 39-010-64201-224
Milan 39-02-2515181
Turin 39-011-5513-211
- **Japan** K.K. Ashisuto
Osaka 81-6-6373-7113
Tokyo 81-3-5276-5863
- **Jordan** Al-Hisn Al-Waqi (AHAW)
Riyadh 996-1-4412664
- **Malaysia** Elite Software Technology Sdn Bhd
Kuala Lumpur 60-3-21165682
- **Norway** InfoBuild Norway
Oslo 47-23-10-02-80
- **Philippines** Beacon Frontline Solutions, Inc.
Makati City 63-2-750-1972
- **Poland/Central and Eastern Europe** InfoBuild SPJ.
Warsaw 48-22-657-00-14
- **Russian Federation** FOBOS Plus Co., Ltd.
Moscow 7-495-124-0810
- **Saudi Arabia** Al-Hisn Al-Waqi (AHAW)
Riyadh 996-1-4412664
- **Singapore**
Automatic Identification Technology Ltd.
Singapore 65-6286-2922
- **South Africa** Fujitsu Services (Pty.) Ltd.
Johannesburg 27-11-2335911
- **South Korea** Unitech Infocom Co. Ltd.
Seoul 82-2-2026-3100
- **Sweden** InfoBuild AB
Kista 46-8-588-370-43
- **Taiwan** Galaxy Software Services
Taipei 886-2-2586-7890
- **Thailand** Datapro Computer Systems Co. Ltd.
Bangkok 662-679-1927, ext. 200
- **Venezuela** InfoServices Consulting
Caracas 58-212-763-1653

Toll-Free Number

- **Sales, ISV, VAR, and SI Partner Information**
(800) 969-4636

* Training facilities are located at these branches.



Corporate Headquarters Two Penn Plaza, New York, NY 10121-2898 (866) 297-4929
iwayssoftware.com info@iwayssoftware.com

For International Inquiries +1(212) 330-1700

Copyright © 2007 by iWay Software. All rights reserved. Patent pending. [74] All products and product names mentioned in this publication are trademarks or registered trademarks of their respective companies.

DN3601202.0807



Printed in the U.S.A.
on recycled paper